



# MONTHLY MEMBERSHIP PROGRESS REPORT

District 26 M2

Results as of: 06/30/2018

GMT: JOE AL PICONE

LOCATION MISSOURI

GMT CA

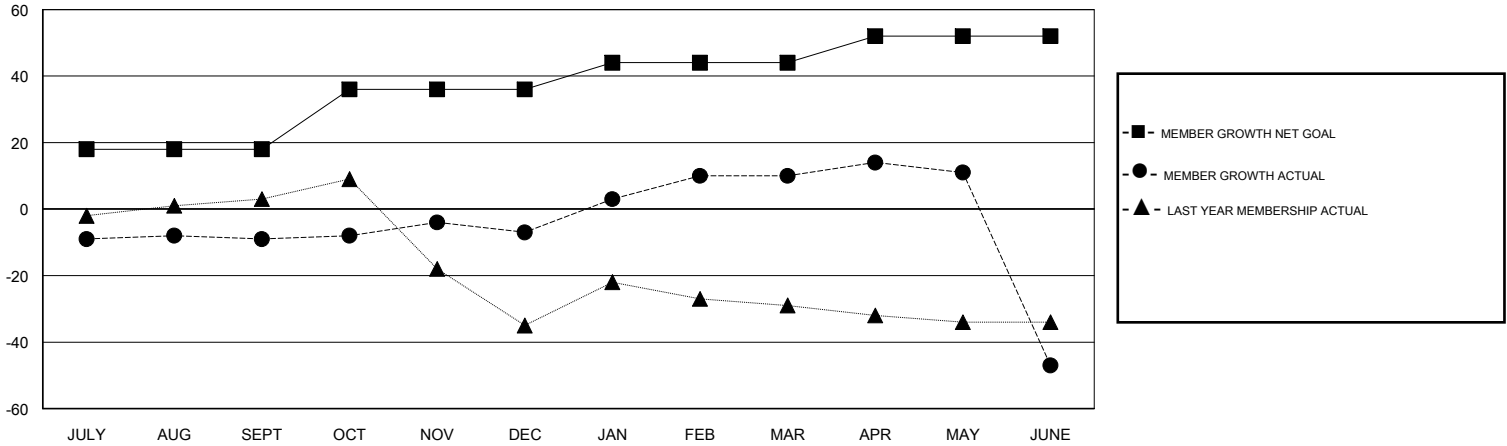
Clubs			
RESULTS FOR 2017-2018			
QUARTER	NEW CLUB GOAL	NEW CLUBS	DROPPED CLUBS
JULY/AUG/SEPT	0	0	0
OCT/NOV/DEC	1	0	0
JAN/FEB/MAR	0	0	0
APR/MAY/JUNE	0	0	0

Members			
RESULTS FOR 2017-2018			
QUARTER	MEMBER GROWTH NET GOAL	MEMBER GROWTH ACTUAL	DROPPED MEMBERS ACTUAL (including transfers)
JULY/AUG/SEPT	18	22	28
OCT/NOV/DEC	18	54	52
JAN/FEB/MAR	8	53	32
APR/MAY/JUNE	8	46	98

GOALS AND ACTUAL NEW CLUBS CUMULATIVE



GOALS AND ACTUAL MEMBERS CUMULATIVE



DROPPED CLUBS: 0
------------------

31 CLUBS OF 39 ADDED 1 OR MORE NEW MEMBERS

GENDER DISTRIBUTION	
MALE	988 (70.82%)
FEMALE	407 (29.18%)
Women Percentage Fiscal Year Goal: 30%	

DROPPED MEMBERS	
DECEASED	19
CLUB CANCELLED	0
OTHER	191
<b>TOTAL</b>	<b>210</b>

[CLICK HERE FOR CUMULATIVE MEMBERSHIP DATA](#)

TOTAL FAMILY UNIT MEMBERS	0
FAMILY MEMBERS PAYING HALF DUES	0